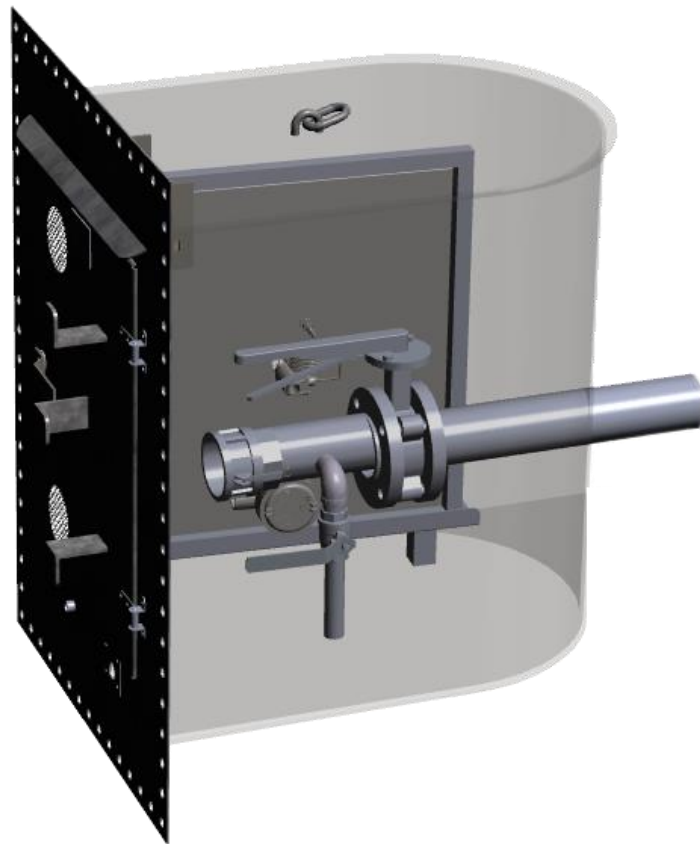


EnviroVault™ Bolt-in Retrofit Tank Heater



4017 60th Avenue, Innisfail, Alberta, Canada, T4G 1S9
1-888-945-0172 www.envirovault.com

WARNING – READ AND SAVE THESE OPERATING AND SAFETY INSTRUCTIONS BEFORE USING THIS PRODUCT. IF YOU DO NOT UNDERSTAND THESE INSTRUCTIONS OR PRODUCT LABELS PLEASE CALL OUR CUSTOMER REPRESENTATIVES AT (888) 945-0172 FOR ASSISTANCE BEFORE USING THIS PRODUCT.

Warning – Read all instructions before installing and using this heater

Warning – This heater is hot when in use. To avoid burns, do not let bare skin touch hot surfaces

Warning – This is an engineered product, refer to usage markings on the front of the door for guidance on which size tanks this is designed for.

Contents

1.1 Manway Flange Face	3
1.2 Internal Chamber	3
1.3 Truckout Connection (Optional)	3
1.4 Explosion Proof Catalytic Heater (Optional)	3
1.5 Class 1/Zone 1 Wiring Package (Optional)	3
2.0 Getting to know your Vault:	4
3.0 Installation steps:	5
3.1 Step 1 – Tank Inspection	5
3.2 Step 2 – Bolt-in Inspection	5
3.3 Step 3 – Slide into place	5
3.4 Step 4 – Install gasket and bolt into position	5
4.0 EnviroVault Torque Guide	6
5.0 Warranty	7

Thank you for purchasing the EnviroVault Bolt-in. The EnviroVault Bolt-in is designed to easily retrofit into existing API tank manways without the use of hot work.

The EnviroVault Bolt-in consists of (5) Key components:

- Manway flange face
- Internal chamber
- Truckout connection (optional)
- Explosion-proof catalytic heater (optional)
- Class 1/Zone 1 Wiring Package (optional)

1.1 Manway Flange Face

EnviroVault has an extensive library of manway flange face designs and bolt patterns. It is crucial to provide your EnviroVault representative with an accurate measurement of the flange face before ordering to ensure a proper fit.

1.2 Internal Chamber

The patented internal chamber design improves heat transfer to the tank, protects the heater, valves and limits the external projections from the tank.

1.3 Truckout Connection (Optional)

Installing a truckout valve inside the bolt-in protects from the elements, and reduces the risk of damage.

1.4 Explosion Proof Catalytic Heater (Optional)

EnviroVault utilizes explosion-proof catalytic heaters that are CSA certified for use in hazardous locations. These highly efficient heaters are reliable and easy to operate. Please refer to the Catadyne WX Series manual for further information.

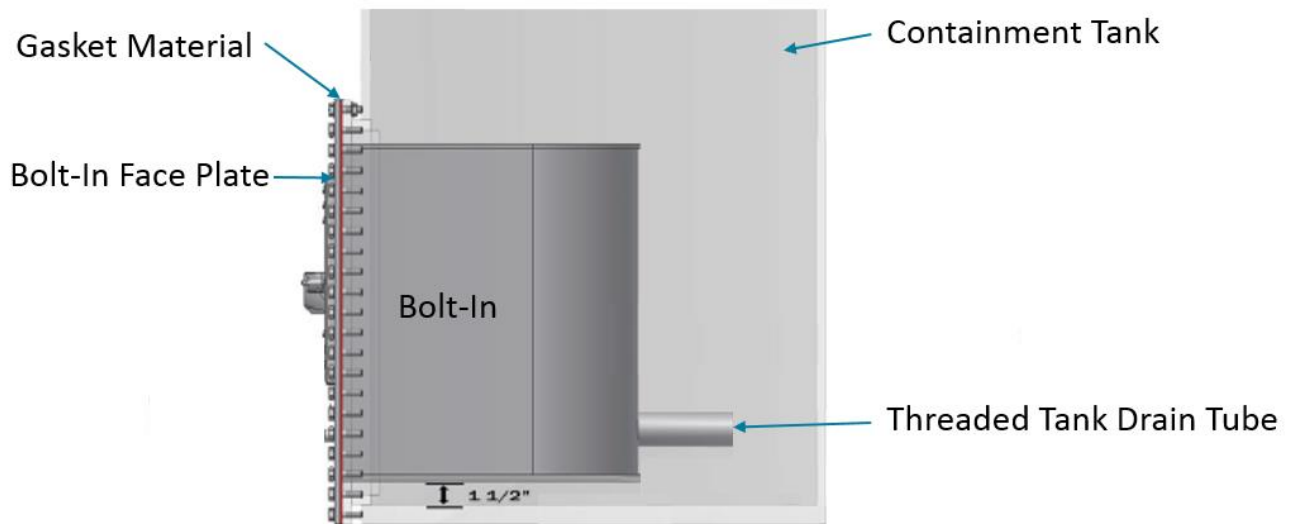
EnviroVault provides ventilation in the door assembly to allow for the proper function of the catalytic gas heater.

NOTE: Do not block vents; this will impact the performance of the heater.

1.5 Class 1/Zone 1 Wiring Package (Optional)

Wiring packages inspected and approved for Class 1/Div 1 hazardous areas (Canada). Wiring package not included with all bolt-ins. In this case, have a certified electrician complete the electrical connection.

2.0 Getting to know your Vault:



The EnviroVault Bolt-in is built based on tank manway specifications provided upon ordering.

Responsibility for safe installation lies with the end-user and or the installation crew. Follow installation instructions to avoid damage to the EnviroVault Bolt-In and Tank, coating if applicable.

3.0 Installation steps:

3.1 Step 1 – Tank Inspection

Ensure that the containment tank is empty of any fluids and is safe for work.

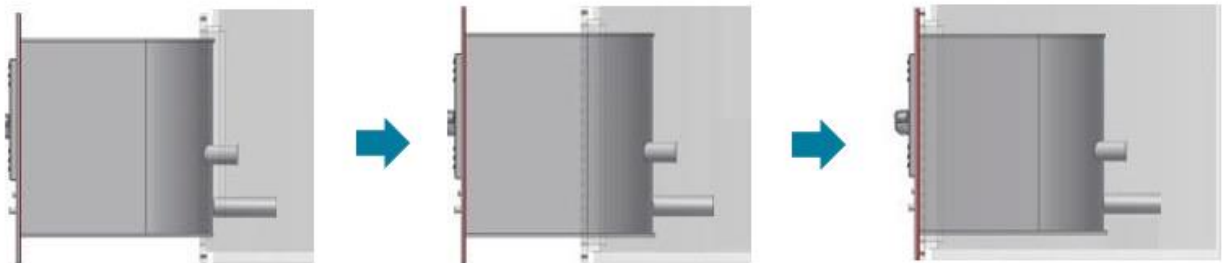
Take a walk around the bolt-in vault to ensure that there is no noticeable damage to the vault and or coating (if applicable). If there are any visible rocks or debris on the vault, please remove them before installation.

3.2 Step 2 – Bolt-in Inspection

Remove the existing manway hardware and cover plate. Ensure that the seal around the door is clear of any debris, as this may prevent the vault from achieving a tight seal. Inspect and clean the floor area of the tank where the sleeper will move through during installation.

3.3 Step 3 – Slide into place

Slide the vault directly into the tank.



3.4 Step 4 – Install gasket and bolt into position

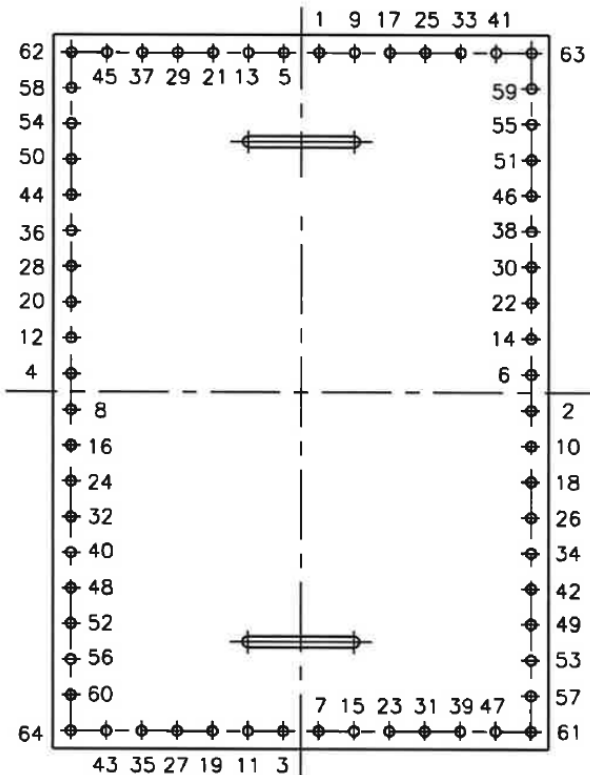
Position the gasket material in place and carefully line up the bolt holes with the manway flange face. Once in position, begin installing the bolts around the face of the flange. Use the torque specifications provided with your tank at the time of purchase.

NOTE: Gasket material, bolts & nuts, not included with the EnviroVault Bolt-in.

4.0 EnviroVault Torque Guide

WARNING - It is essential to follow the torque instructions issued from your tank manufacturer.

WARNING - Over tightening may cause gasket failure



1. Align component parts and clamp together with suitable clamping device.
2. Lubricate bolt threads in area on nut engagement, face of nuts and bolt head using a suitable lubricant.
3. Install all bolts and nuts finger tight
4. Torque all bolts to 20 ft-lbs in the sequence indicated, then repeat to full torque value based on chart below.
5. Use rotational tightening until all bolts are stable at final torque level.

Nominal Dia. (in.)	Threads per inch	SAE J429 Grade 2			SAE J429 Grade 5			SAE J429 Grade 8					
		Clamp Load (lbs.)	Tightening Torque			Clamp Load (lbs.)	Tightening Torque			Clamp Load (lbs.)	Tightening Torque		
			K = 0.15	K = 0.18	K = 0.20		K = 0.15	K = 0.18	K = 0.20		K = 0.15	K = 0.18	K = 0.20
Unified Coarse Thread Series													
7/16	14	4385	24	29	32	6777	37	44	49	9568	52	63	70
1/2	13	5853	37	44	49	9046	57	68	75	12771	80	96	106

K = 0.15 (LUBRICATED CONDITIONS); 0.18 (ZINC PLATED AND DRY CONDITIONS); 0.20 (PLAIN DRY CONDITIONS)

5.0 Warranty

This 1-year limited warranty applies to repair or replacement of product found to be defective in material or workmanship. This warranty does not apply to damage resulting from commercial, abusive, unreasonable use or supplemental damage. Defects that are the result of normal wear and tear will not be considered manufacturing defects under this warranty.